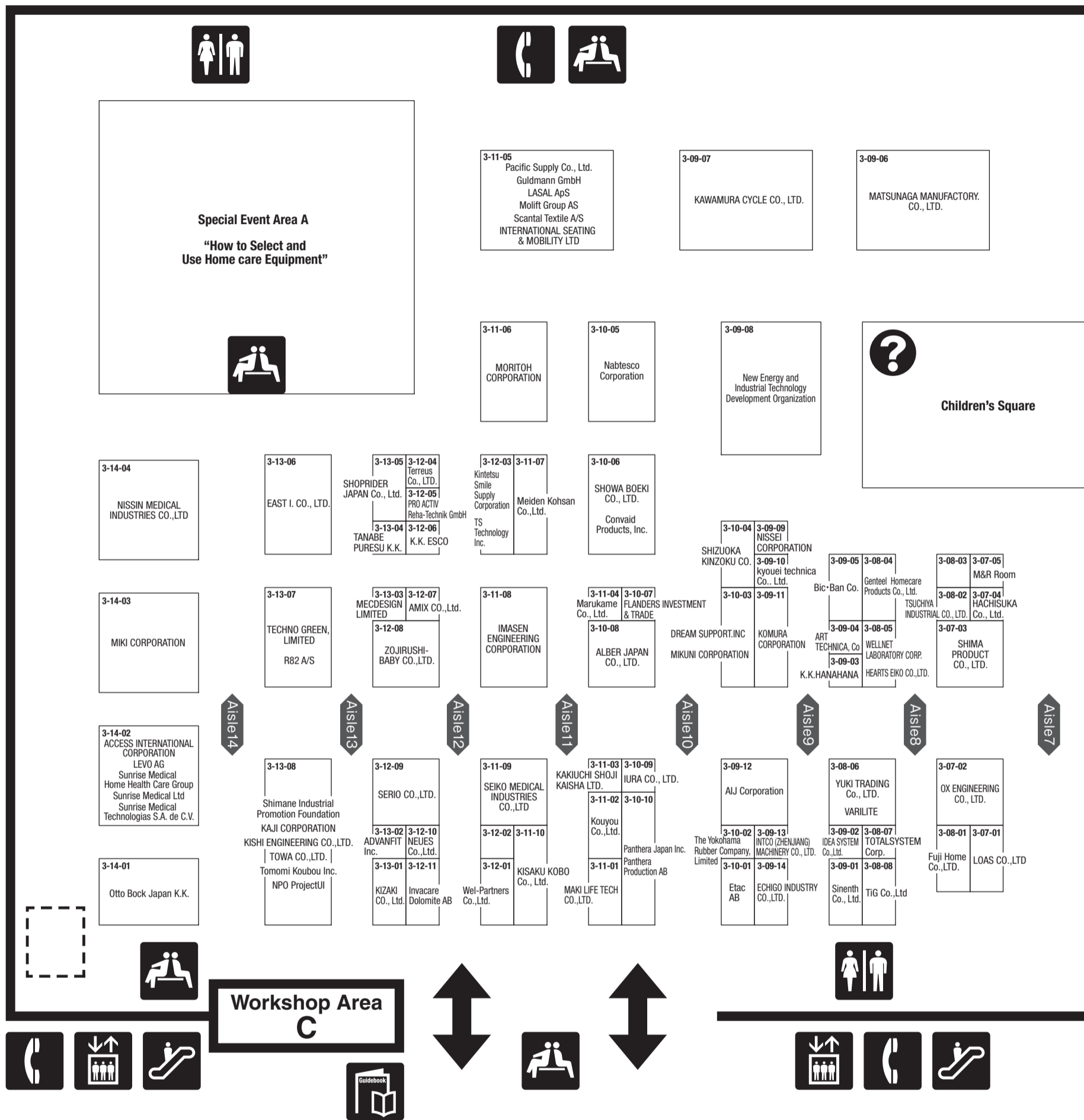


# Guide for East Hall 2 ~ 3 (Aisle Carpet Color : Orange)

East Hall 3



East Hall 2



● Japanese Exhibitors in East Hall 2 - 3 (Alphabetical Order)

Exhibitor	Booth No.	Exhibitor	Booth No.	Exhibitor	Booth No.	Exhibitor	Booth No.
ACCESS INTERNATIONAL CORPORATION	3-14-02	DUNLOP HOME PRODUCTS,LTD.	2-05-08	Itagaki Ltd.	2-03-08	Kintetsu Smile Supply Corporation	3-12-03
ADVANFIT Inc.	3-13-02	EAST I. CO., LTD.	3-13-06	IURA CO., LTD.	3-10-09	KISAKU KOBO Co., Ltd.	3-11-10
AIJ Corporation	3-09-12	ECHIGO INDUSTRY CO.,LTD.	3-09-14	JAPAN ELECTRONICS INDUSTRY LTD.	2-04-03	KISHI ENGINEERING CO.,LTD.	3-13-08
AISEI DENNETSU Co., Ltd.	2-03-13	EVERCARE Co., Ltd.	2-04-04	Japanese Association of Occupational Therapists	2-03-09	Kiyota & Co., Ltd.	2-05-04
ALBER JAPAN CO., LTD.	3-10-08	FLANDERS INVESTMENT & TRADE	3-10-07	K.K. daise	2-04-01	KOMURA CORPORATION	3-09-11
AMIX CO.,Ltd.	3-12-07	Fuji Home Co.,LTD.	3-08-01	K.K. ESCO	3-12-06	Kouyou Co.,Ltd.	3-11-02
Apron World Co., Limited	2-04-17	HACHISUKA Co., Ltd.	3-07-04	K.K.HANAHANA	3-09-03	kyoei technica Co., Ltd.	3-09-10
ART TECHNICA, Co	3-09-04	HART WALKER JAPAN Co.,Ltd.	2-04-11	KAJI CORPORATION	3-13-08	LOAS CO.,LTD	3-07-01
AZUSA inc.	2-05-15	HEARTS EIKO CO.,LTD.	3-08-05	KAKIUCHI SHOJI KAISHA LTD.	3-11-03	M&R Room	3-07-05
Bic · Ban Co.	3-09-05	Honey International Ltd.	2-05-06	Kanagawa Institute of Technology	2-06-05	MITSUBISHI MOTORS CORPORATION	2-06-06
Bio Safety Techno CO., Ltd.	2-03-12	IDEA SYSTEM Co.,Ltd.	3-09-02	Kanayama-Machinery,Co.Ltd	2-07-01	MORITO CO., LTD.	2-05-11
Biospace Co., Ltd	2-04-08	Ido Support Co., Ltd.	2-03-07	KANDA TSUSHIN KOGYO CO.,LTD	2-04-11	MORITOH CORPORATION	3-11-06
CRYSTAL INDUSTRIAL Co., Ltd.	2-05-03	IMASEN ENGINEERING CORPORATION	3-11-08	KARSEE KASHIMA CO.LTD.	2-04-16	Nabtesco Corporation	3-10-05
CUP CORPORATION	2-03-14	INTER-CORE Corp.	2-06-02	KAWAMURA CYCLE CO., LTD.	3-09-07	NAGASAKI PREFECTURAL GOVERNMENT	2-04-14
DaiwaHouseIndustry Co.,Ltd./CYBERDYNE, Inc.	2-05-12	ISHII Co., Ltd.	2-06-01	Kinden Corporation	2-05-14	Nakamura Brace Co.,Ltd.	2-05-07
DREAM SUPPORT.INC	3-10-03	ISOHATA KOGYO CORPORATION	2-06-03			NEUES Co.,Ltd.	3-12-10
						New Energy and Industrial Technology Development Organization	3-09-08
						NIHON ASAHI KIKO HANBAI CO.,LTD	2-05-01
						Nihon Mexid Co., Ltd.	2-04-15
						NISSEI CORPORATION	3-09-09
						NISSIN MEDICAL INDUSTRIES CO.,LTD	3-14-04



Mobility - Others



Equipment & Related Products for Institutions



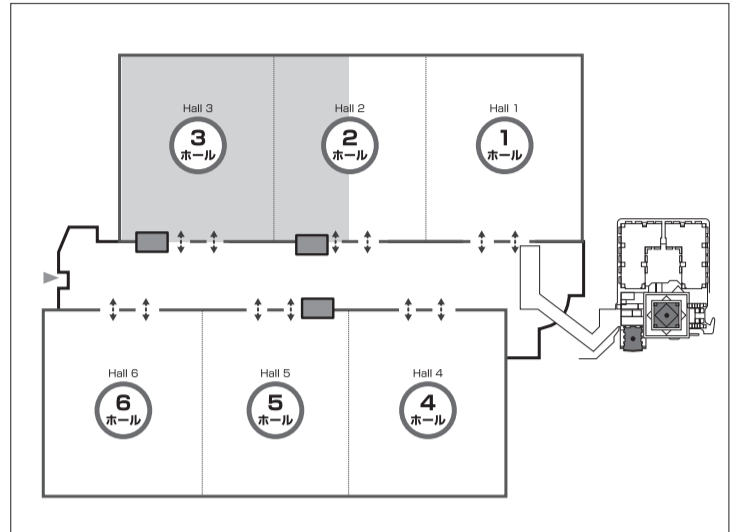
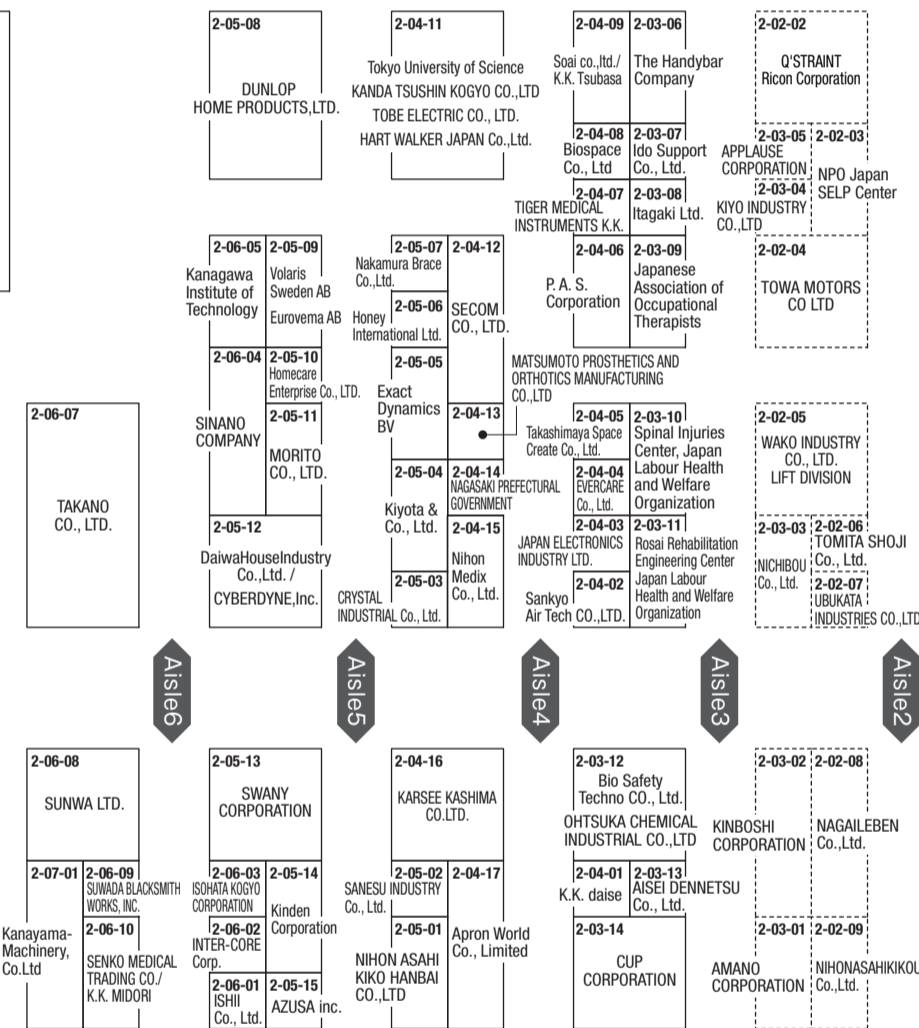
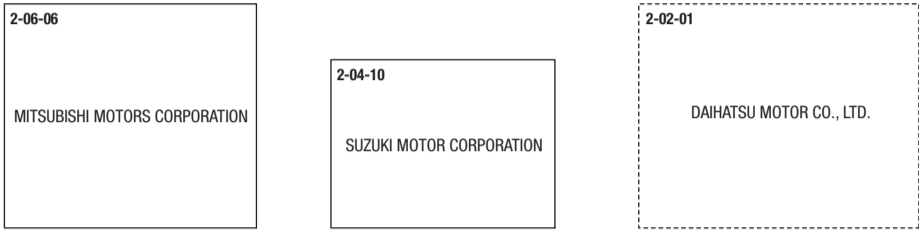
Rehabilitation Equipment & Orthopedics



Casualty Prevention Products



Car Related Aids



総合案内所/会場内案内所  
Information



エレベーター  
Elevator



エスカレーター  
Escalator

The escalator next to East Hall 4 is for wheelchair users.



トイレ  
Restrooms



電話  
Telephone



休憩所  
Lounge



ガイドブック販売所  
Guidebook

The Aisle Carpet Color for East Hall 2 - 3 is Orange.



Exhibitor	Booth No.
NPO ProjectUI	3-13-08
OHTSUKA CHEMICAL INDUSTRIAL CO.,LTD	2-03-12
Otto Bock Japan K.K.	3-14-01
OX ENGINEERING CO., LTD.	3-07-02
P. A. S. Corporation	2-04-06
Pacific Supply Co., Ltd.	3-11-05
Panthera Japan Inc.	3-10-10
Rosai Rehabilitation Engineering Center Japan Labour Health and Welfare Organization	2-03-11
SANESU INDUSTRY Co., Ltd.	2-05-02
Sankyo Air Tech CO.,LTD.	2-04-02
SECOM CO., LTD.	2-04-12
SEIKO MEDICAL INDUSTRIES CO.,LTD	3-11-09
SENKO MEDICAL TRADING CO./K.K. MIDORI	2-06-10
SERIO CO.,LTD.	3-12-09
SHIMA PRODUCT CO., LTD.	3-07-03

Exhibitor	Booth No.
Shimane Industrial Promotion Foundation	3-13-08
SHIZUOKA KINZOKU CO.	3-10-04
SHOPRIDER JAPAN Co., Ltd.	3-13-05
SHOWA BOEKI CO., LTD.	3-10-06
SINANO COMPANY	2-06-04
Sinenth Co., Ltd.	3-09-01
Soai co.,Ltd./K.K. Tsubasa	2-04-09
Spinal Injuries Center, Japan Labour Health and Welfare Organization	2-03-10
SUNWA LTD.	2-06-08
SUWADA BLACKSMITH WORKS, INC.	2-06-09
SUZUKI MOTOR CORPORATION	2-04-10
SWANY CORPORATION	2-05-13
TAKANO CO., LTD.	2-06-07
Takashimaya Space Create Co., Ltd.	2-04-05
TANABE PURESU K.K.	3-13-04

Exhibitor	Booth No.
TECHNO GREEN, LIMITED	3-13-07
Terreus Co., LTD.	3-12-04
The Yokohama Rubber Company,Limited	3-10-02
TiG Co.,Ltd	3-08-08
TOTALSYSTEM CORP.	2-04-07
TOBE ELECTRIC CO., LTD.	2-04-11
Tokyo University of Science	2-04-11
Tomomi Koubo Inc.	3-13-08
TOWA CO.,LTD.	3-13-08
TS Technology Inc.	3-12-03
TSUCHIYA INDUSTRIAL CO., LTD.	3-08-02
WELLNET LABORATORY CORP.	3-08-05
Wel-Partners Co.,Ltd.	3-12-01
YUKI TRADING Co., LTD.	3-08-06
ZOJIRUSHI-BABY CO.,LTD.	3-12-08

●Overseas Exhibitors in East Hall 2 - 3 (Alphabetical Order)

Exhibitor	Booth No.
Convaid Products, Inc.	3-10-06
Etac AB	3-10-01
Eurovema AB	2-05-09
Exact Dynamics BV	2-05-05
Genteeel Homecare Products Co., Ltd.	3-08-04
Guldmann GmbH	3-11-05
Homecare Enterprise Co., LTD.	2-05-10
INTCO (ZHENJIANG) MACHINERY CO., LTD.	3-09-13
INTERNATIONAL SEATING & MOBILITY LTD	3-11-05
Invacare Dolomite AB	3-12-11
LASAL ApS	3-11-05
LEVO AG	3-14-02
Molift Group AS	3-11-05

Exhibitor	Booth No.
Panthera Production AB	3-10-10
PRO ACTIV Reha-Technik GmbH	3-12-05
R82 A/S	3-13-07
Scantal Textile A/S	3-11-05
Sunrise Medical Home Health Care Group	3-14-02
Sunrise Medical Ltd	3-14-02
Sunrise Medical Technologias S.A. de C.V.	3-14-02
The Handybar Company	2-03-06
VARILITE	3-08-06
Volaris Sweden AB	2-05-09